

Centre Operations

Annual Workshop

26 November 2020



What is Centre Operations?

Day-to-day operations of the Centre, including:

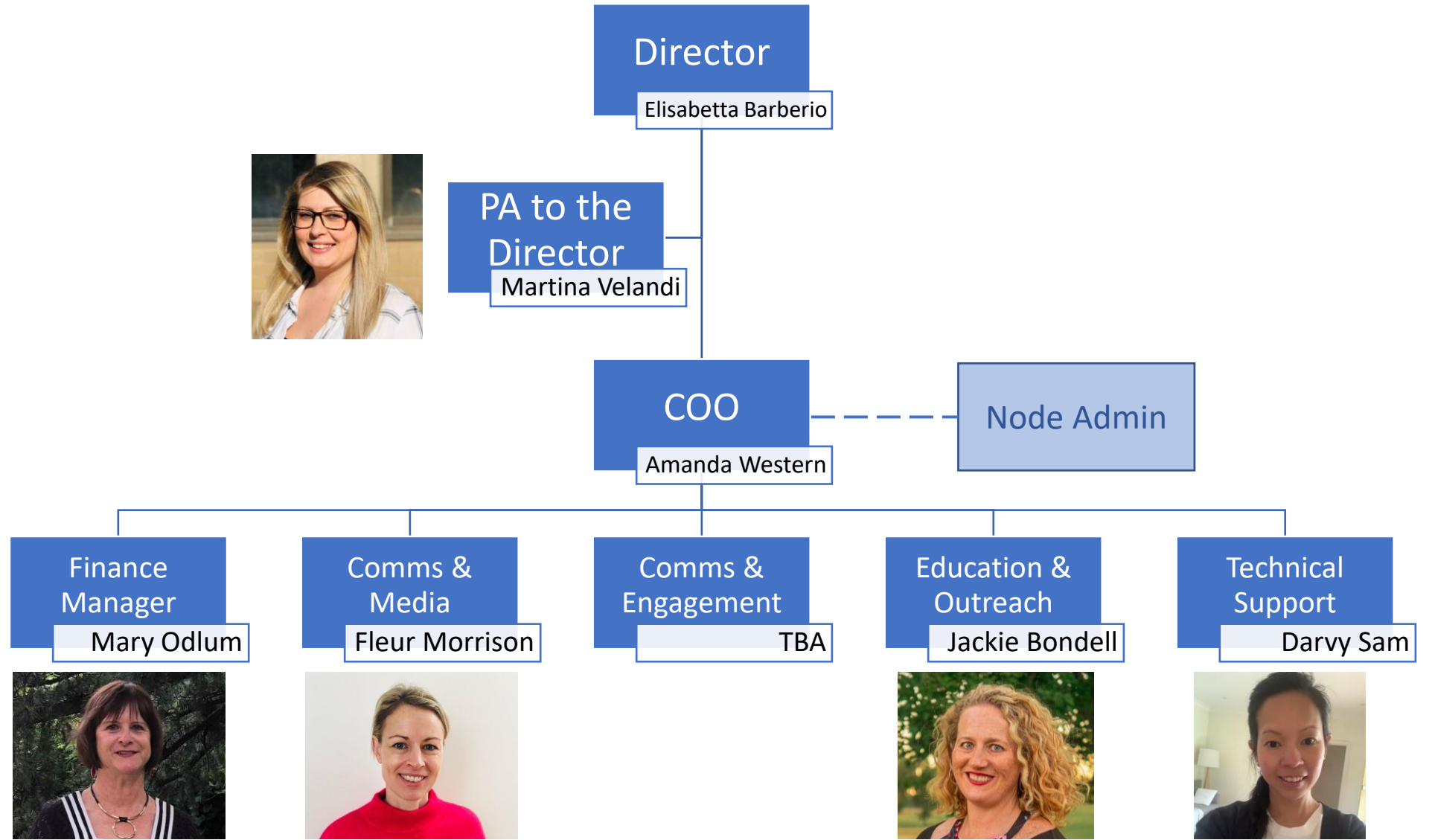
- Support Centre's core activities and initiatives
- Agreements
- HR
- Finance
- Administration
- Internal communication
- Branding, online presence
- Portfolio support & resourcing
- Event planning, logistics & support
- Reporting internally & to the ARC.

What is a COO?

- Oversee day-to-day operations of the Centre
- Provide high level strategic support to the Centre Director

Special Project (2020 & 2021):

- Monitoring SUPL construction progress & funding body reporting



Reporting

- Activities
- Outcome based

- Annual reporting requirements
- Key performance indicators (KPIs) as set out by the ARC

- Database- Polestar

KPI's

Key performance indicators:

Key performance indicators (KPIs)	2021	2022	2023	2024	2025	2026
<i>Transformational Research</i>						
Refereed publications: LHC	10	10	10	10	10	10
Refereed publications: Direct detection, Metrology, Instrumentation, Theory	40	50	50	50	50	50
% of refereed publications in ISI top 20% of journals	30%	40%	40%	40%	40%	40%
Invited presentations	15	20	20	20	20	20
Contributed presentations	50	60	70	70	70	70
<i>Building Australia's Science Capacity</i>						
PhD Commencements	10	10	10	10	10	10
PhD Completions	-	-	9	9	9	9
Honours/MSc/MPhil Completions	12	15	15	15	15	15
New continuing academic positions (total - male or female)	3	-	-	-	-	-
New continuing academic positions (only for female applicants)	2	-	-	-	-	-
<i>Community Impact and Engagement</i>						
Press releases	8	8	8	8	8	8
Website hits (×1,000)	10	15	15	15	15	15
School visits or Webcasts	20	25	25	25	25	25
News stories	5	5	5	5	5	5
Muon detector deployment to Australian schools	10	20	20	20	20	20
Centre's Dark Matter Prize for High School students (# entries)	50	50	50	50	50	50
<i>Industry Engagement and Translation</i>						
Industry briefings	2	3	3	3	3	4
ARC Linkage applications	1	1	1	1	1	1
Industry/External internships for PhDs	3	4	4	4	4	4
Visits to international laboratories	20	20	20	20	20	20
<i>Equity and Diversity</i>						
% of female/male (new PhD/Honours/MSc/MPhil)	>30	>30	>30	>30	>30	>30
% of female/male (new Level A/B Res Assoc appointments)	>30	>30	>30	>30	>30	>30

SUPL overview

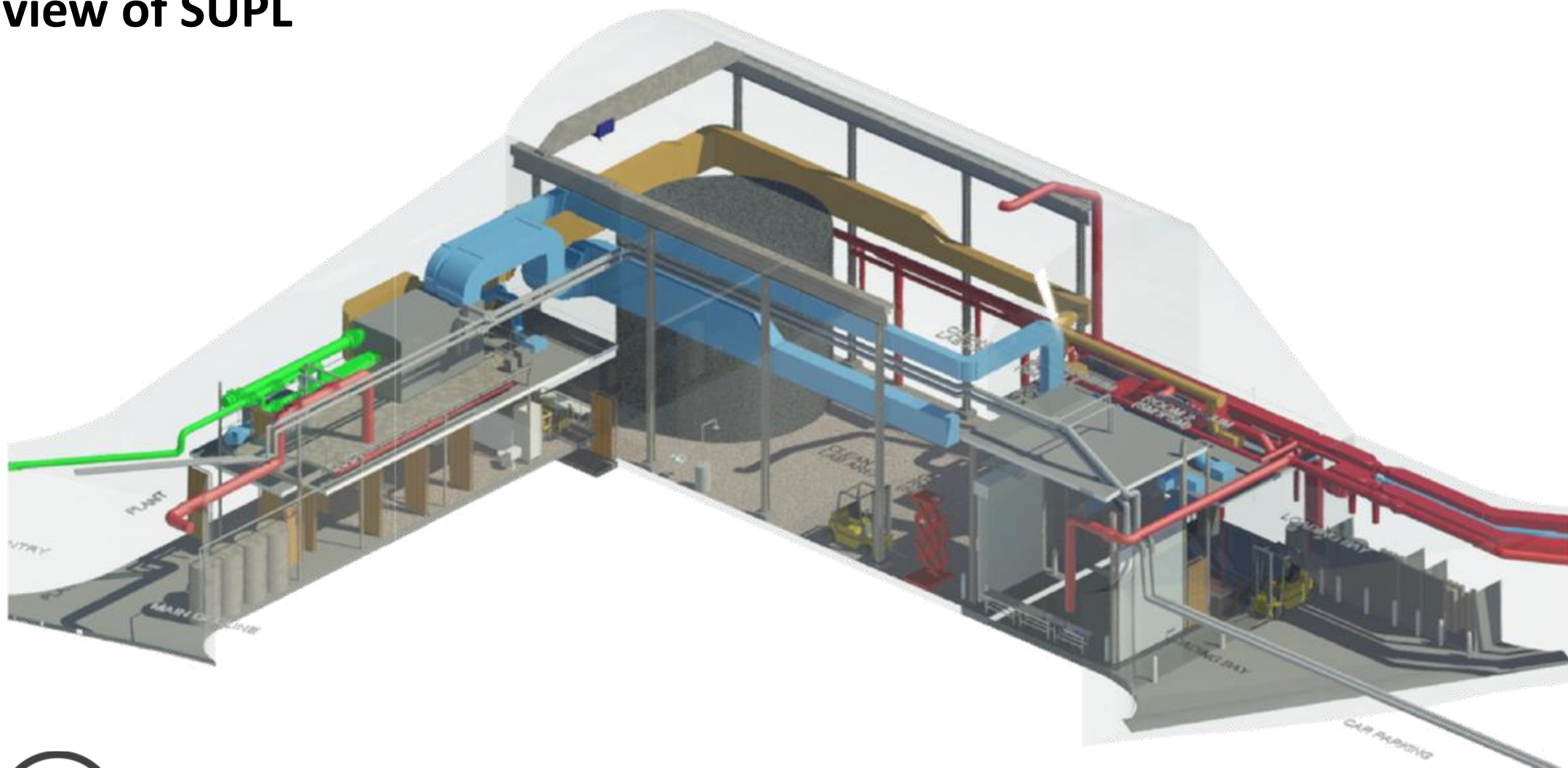
Located 1025m vertically underground in the Stawell Gold Mine (7km by road)

Main experimental hall 33m long, 10m wide, 12.3m high

Side access wing

To house the multi-disciplinary work of scientists from five research partners-
UoA, ANU, UoM, Swinburne and ANSTO

Isometric view of SUPL



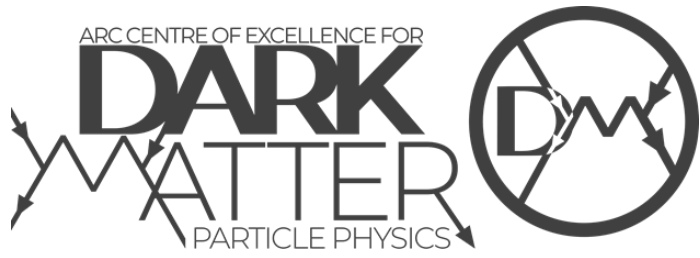
View from the incline



Main experimental hall

-4,700 m³ of
rock excavated





INTERNATIONAL PARTNER ORGANISATIONS:



The University of Sheffield.

